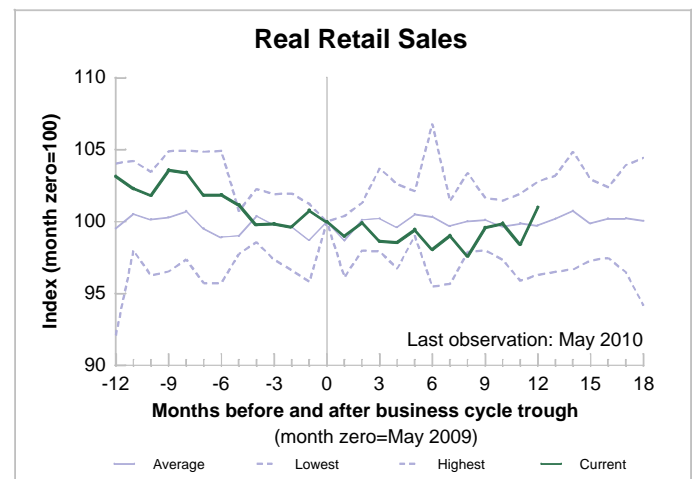
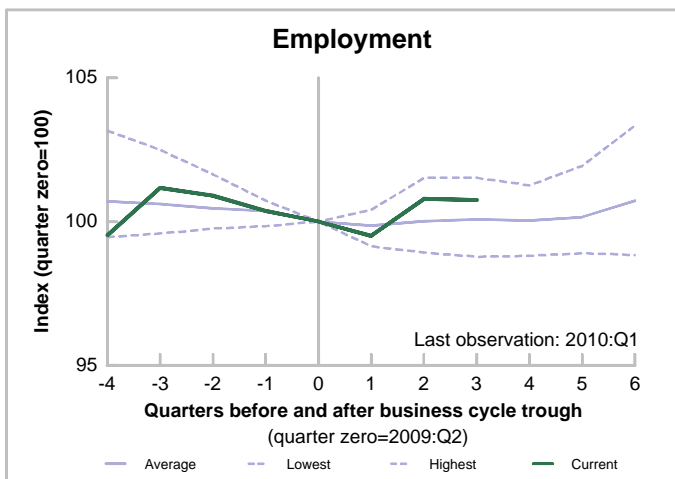
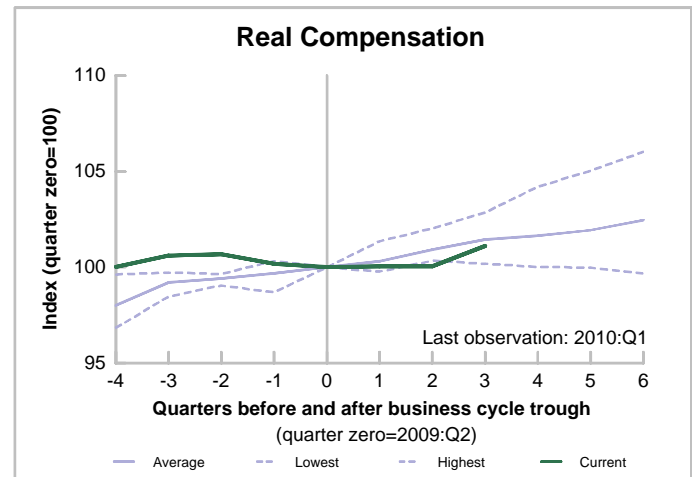
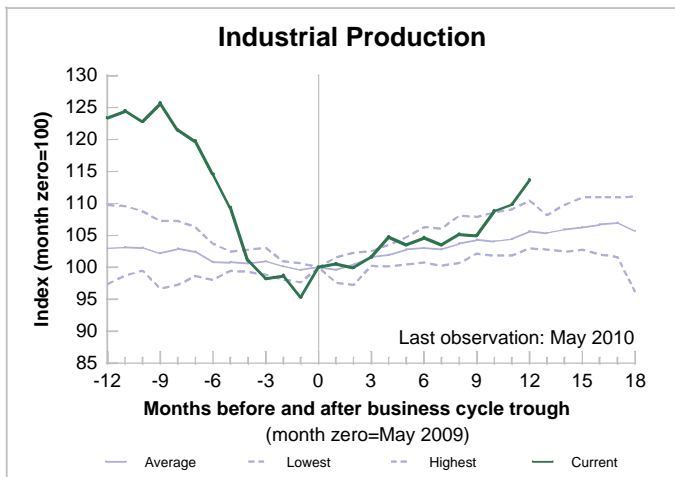


Tracking the Global Expansion: Economic Indicators - Germany



Data last updated 2010-08-20.

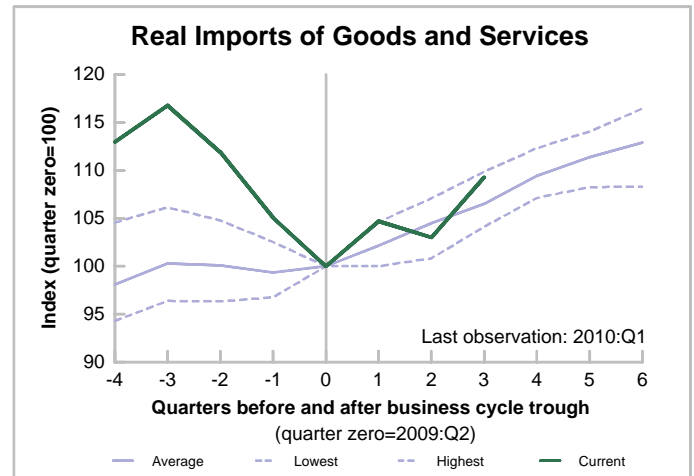
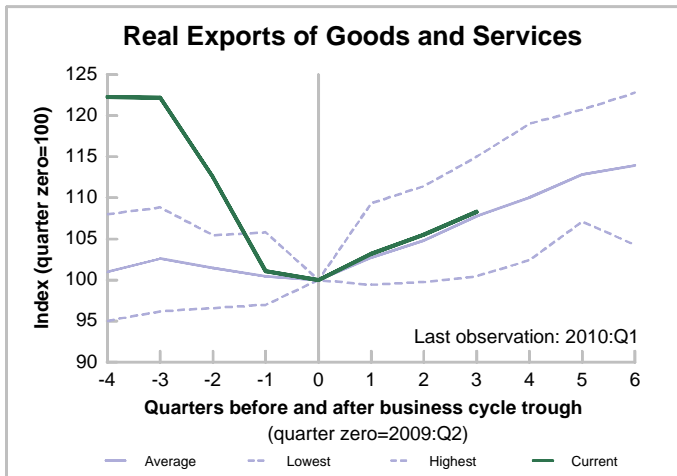
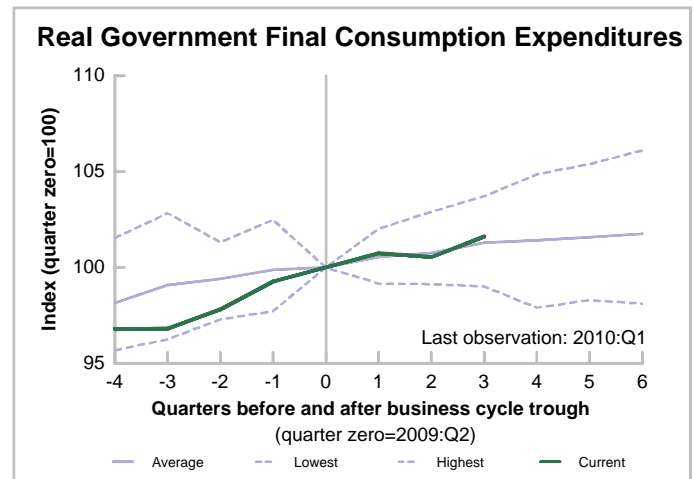
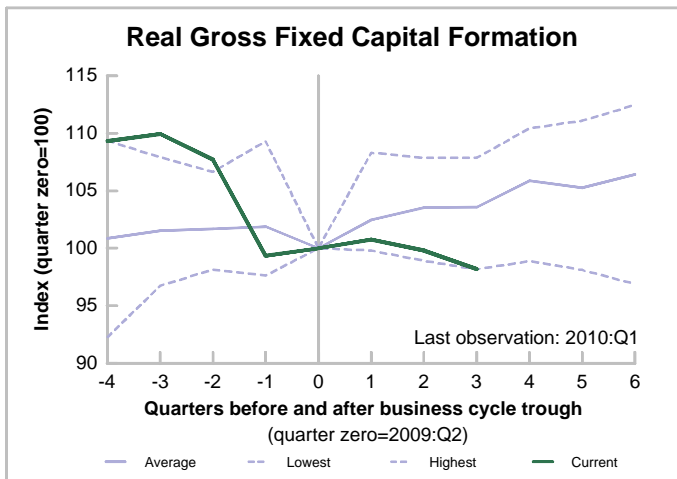
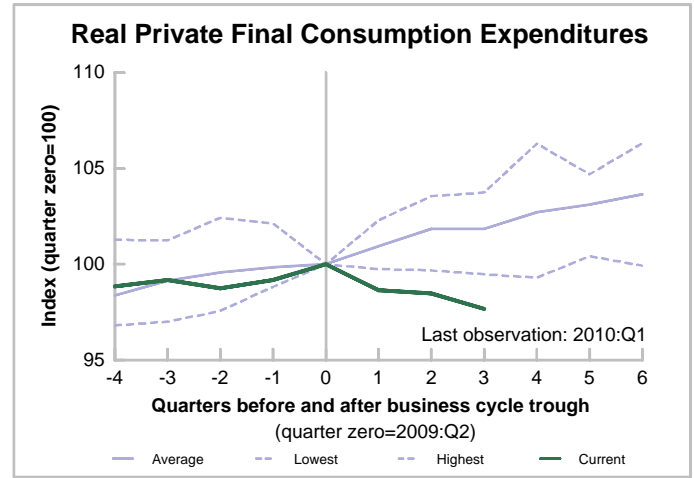
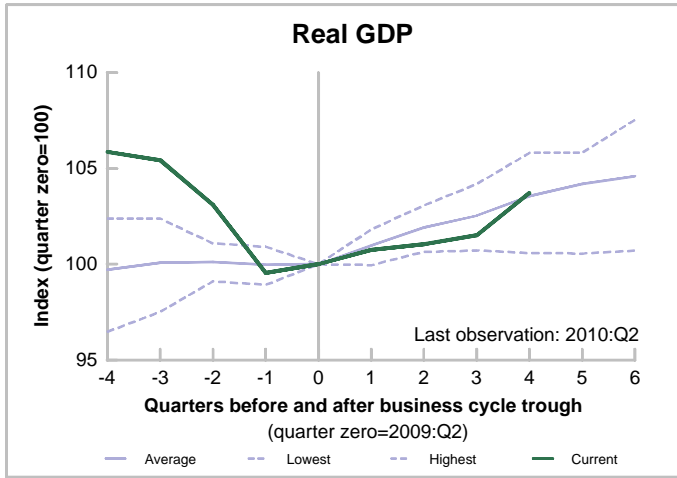
NOTE: The charts plot four main economic indicators similar to those tracked by the [NBER](#) dating committee for the U.S.; each series is indexed to 100 at the business cycle trough. The green line indicates the [current expansion](#). The solid blue line indicates the average of the [previous eight expansions](#), starting with the June 1975 trough. The two dashed lines report the highest and lowest values recorded across these previous expansions.

SOURCE: *Main Economic Indicators and Quarterly National Accounts*, © Organisation for Economic Co-Operation and Development (OECD), <<http://www.oecd.org>>.

Industrial Production (industry excluding construction); Real Compensation (compensation of employees deflated by the consumer price index: all items [seasonally adjusted by the Federal Reserve Bank of St. Louis]); Civilian Employment; Real Retail Sales (value of retail sales deflated by the consumer price index: all items [seasonally adjusted by the Federal Reserve Bank of St. Louis])

2010 Federal Reserve Bank of St. Louis: research.stlouisfed.org

Tracking the Global Expansion: GDP Data - Germany



Data last updated 2010-08-20.

NOTE: The charts plot Real Gross Domestic Product (SA, Chained) and its major components; each series is indexed to 100 at the business cycle trough. The green line indicates the [current expansion](#). The solid blue line indicates the average of the [previous eight expansions](#), starting with the June 1975 trough. The two dashed lines report the highest and lowest values recorded across these previous expansions.

SOURCE: *Quarterly National Accounts*, © Organisation for Economic Co-Operation and Development (OECD), <http://www.oecd.org>.

NOTES and SOURCES

GERMANY

The charts plot four main economic indicators, similar to those tracked by the [NBER](#) dating committee for the U.S., and Real Gross Domestic Product and its major components; each series is indexed to 100 at the business cycle turning point. The red (green) line indicates the [current](#) recession (expansion). The solid blue (gray) line indicates the average of previous recessions (expansions). The two dashed lines report the highest and lowest values recorded across these previous recessions (expansions).

The data and recession dates used in the international charts are from the Organisation for Economic Co-Operation and Development (OECD).

BUSINESS CYCLE TURNING POINTS:

Peak Dates

- April 1973
- January 1977
- January 1980
- October 1985
- February 1991
- December 1994
- April 1998
- November 2000
- March 2008

Trough Dates

- June 1975
- April 1978
- December 1982
- March 1988
- June 1993
- February 1996
- February 1999
- July 2003
- May 2009

SOURCE: http://www.oecd.org/document/29/0,3343,en_2649_34349_35725597_1_1_1_1,00.html

DATA DESCRIPTIONS:

The following data series are used to create the charts:

- Industrial Production
 - Industry excl. Construction
- Real Compensationⁱ
 - Compensation of Employees
 - deflated by the Consumer Price Index: All Itemsⁱⁱ
- Employment
 - Civilian Employment
- Real Retail Sales
 - Value of Retail Sales
 - deflated by the Consumer Price Index: All Itemsⁱⁱ
- Real Gross Domestic Product
- Real Private Final Consumption Expendituresⁱⁱⁱ
- Real Gross Fixed Capital Formation^{iv}
- Real Government Final Consumption Expenditures^v
- Real Exports of Goods & Services
- Real Imports of Goods & Services

ⁱ U.S. = real income; International = real compensation.

ⁱⁱ Seasonally adjusted by the Federal Reserve Bank of St. Louis.

ⁱⁱⁱ U.S. = personal consumption expenditures;
International = private final consumption expenditures.

^{iv} U.S. = gross private domestic investment;
International = gross fixed capital formation.

^v U.S. = government consumption expenditures and gross investment;
International = government final consumption expenditures.